

# H10G2

## FEATURES

- Alloy steel, nickel plated, bending plate. Adhesive sealed with compression loading available.
- Ingress protection (according to EN 60529): IP67
- Suitable for on-board weighing scales.



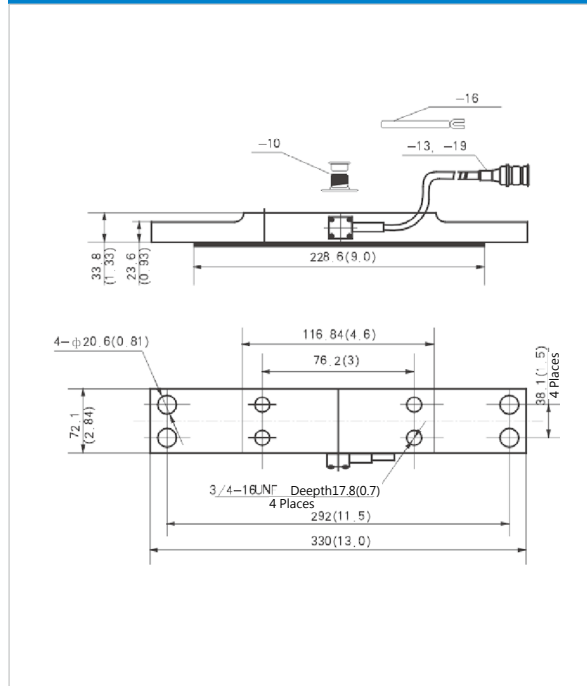
## AVAILABLE MODELS

12.5klb	H10G2-12.5K-10
12.5klb	H10G2-12.5K-13
12.5klb	H10G2-12.5K-16
16.5klb	H10G2-16.5K-19

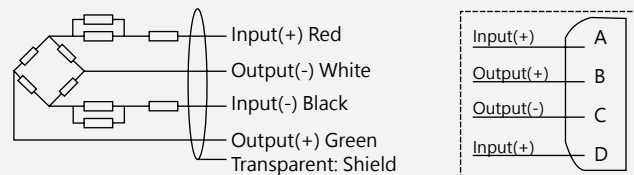
## SPECIFICATION

No. for products type		-10/-13/-16	-19
Maximum capacity (E <sub>max</sub> )	klb	12.5K	16.5K
Output sensitivity (=FS)	mV/V	0.500±0.01mV/V (@12.5K)	0.5291±0.01mV/V (@13228lb)
Accuracy class		G10	
Combined error	%FS	±1.0	±1.0
Hysteresis	%FS	±1.0	±1.0
Non-repeatability	%FS	±0.1	±0.1
Creep (20min)	%FS	±0.1	±0.1
Zero balance	%FS	±2.0	±2.0
Compensated temperature	°C	-10~+40	
Operating temperature	°C	-35~+65	
Temperature effect on sensitivity	%FS/10°C	±0.36	
Temperature effect on zero	%FS/10°C	±0.2	
Input resistance	Ω	415±30	
Output resistance	Ω	350±3.5	
Insulation resistance	MΩ	≥ 5000	
Excitation, recommended voltage	V	5~12 (DC)	
Excitation maximum	V	18 (DC)	
Safe overload	%FS	150	
Ultimate overload	%FS	300	

## DIMENSIONS IN MM



## WIRING



- -10: adopt 4 conductor cable with standard connector.
- -16: adopt 4 conductor cable with square connector. Standard cable length: 10m.
- -13/-19: adopt 4 conductor cable with twin connectors. Standard cable length: 1m.