

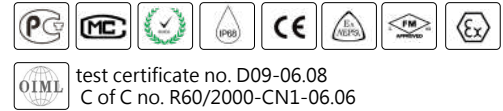
FEATURES

- Nickel plated alloy steel IP68 dual shear beam load cell
- High accuracy
- Suitable for truck, track, hopper and other electronic weighing devices
- Current calibrated (sc-option)



AVAILABLE MODELS

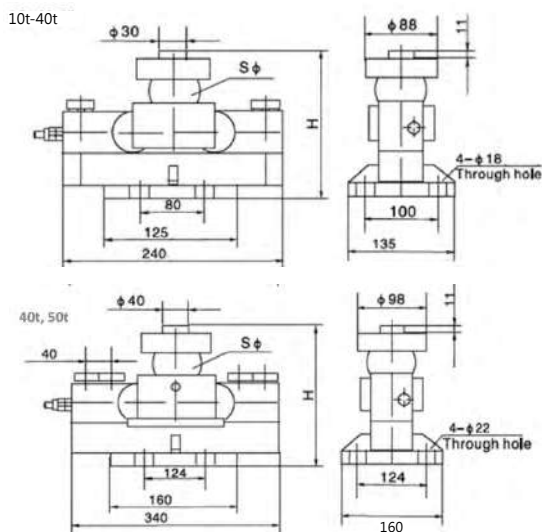
Capacity	Accuracy	Full article description
10 t	C3	HM9B-C3-10t-16B
20 t	C3	HM9B-C3-20t-16B
25 t	C3	HM9B-C3-25t-16B(-SC)
30 t	C3	HM9B-C3-30t-16B(-SC)
40t LE	C3	HM9B-C3-40t LE-16B
40t	C3	HM9B-C3-40t-16B
50t	C3	HM9B-C3-50t-16B



SPECIFICATION

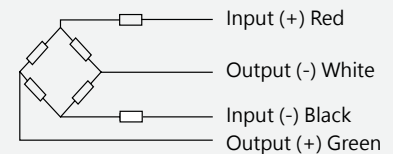
Accuracy class		OIML R60 C3	
Output sensitivity (= FS)	mV/V	2.0 ± 0.002	
Maximum capacity (E _{max})	t	10/20/25	30/40LE/40/50
Maximum number of load cell intervals (nLC)		3000	
Ratio of minimum LC verification interval Y=E _{max} /V _{min}		15000	7500
Combined error	%FS	± 0.023	
Minimum dead load	klb	0	
Safe overload	%FS	150	
Ultimate overload	%FS	300	
Zero balance	%FS	± 1.5	
Excitation, recommended voltage	V	5 ~ 12 (DC)	
Excitation maximum	V	18 (DC)	
Input resistance	Ω	700 ± 7	
Output resistance	Ω	700 ± 7	
Insulation resistance	MΩ	≥ 5000 (50VDC)	
Compensated temperature	°C	-10 ~ +40	
Operating temperature	°C	-35 ~ +65	
Storage temperature	°C	-40 ~ +70	
Element material		Nickel plated alloy steel	
Ingress protection (according to EN 60529)		IP68	
ATEX classification (optional)		II1G Ex ia IIC T4	II1D Ex iaD 20 T73°C II3G Ex nL IIC T4

DIMENSIONS IN MM



Dimension Capacity	H	ΦS
10t	195 (7.68)	50 (1.97)
20t-40t	225 (8.86)	76 (2.99)
40tLE, 50t	267 (10.51)	82 (3.23)

WIRING



- Shielded, 4 conductor cable.
- Cable diameter: Φ5.5mm.
- Standard cable length: 16m, also available in 12m.
- Shield is not connected to element.