

## HM-9-410

### FEATURES

- Compact construction, easy installation.
- Using under heavy static load or slight dynamic load.

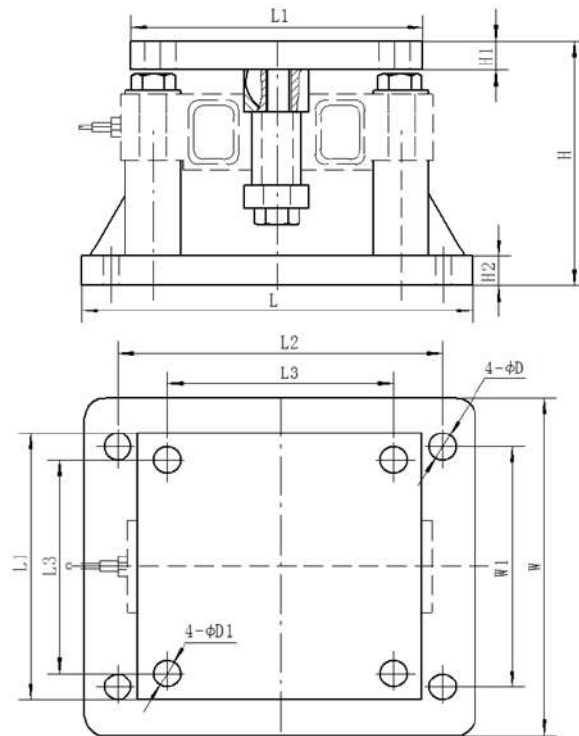
### AVAILABLE MODELS

Capacity	Part number
25K	HM-9-410-25K
40K	HM-9-410-40K
50K-75K	HM-9-410-50/75K
100K-125K	HM-9-410-100/125K
150K-200K	HM-9-410-150/200K



Alloy steel, assembled with H9N

### OUTLINE DIMENSION MM(INCH)



Dimension \ Capacity	H	H1	H2	L	L1	L2	L3	W	W1	D	D1
25K	165.1 (6.5)	19.05 (0.75)	19.05 (0.75)	254 (10)	203.2 (8)	190.5 (7.5)	152.4 (6)	203.2 (8)	152.4 (6)	20 (0.79)	20 (0.79)
40K	198.1 (7.80)	19.05 (0.75)	25.4 (1)	355.6 (14)	203.2 (8)	292.1 (11.5)	152.4 (6)	254 (10)	190.5 (7.5)	20 (0.79)	28.5 (1.12)
50K-75K	241.3 (9.5)	25.4 (1)	25.4 (1)	355.6 (14)	228.6 (9)	292.1 (11.5)	165.1 (6.5)	254 (10)	190.5 (7.5)	28.5 (1.12)	28.5 (1.12)
100K-125K	287.4 (11.31)	31.75 (1.25)	31.75 (1.25)	506.5 (19.94)	259.1 (10.20)	346.1 (13.63)	180.4 (7.10)	292.1 (11.5)	212.7 (8.37)	33.7 (1.33)	33.7 (1.33)
150K-200K	374.7 (14.75)	38.1 (1.5)	38.1 (1.5)	635 (25)	304.8 (12)	508 (20)	203.2 (8)	406.4 (16)	279.4 (11)	41.5 (1.63)	41.5 (1.63)