

H9N

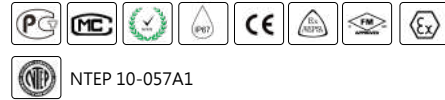
FEATURES

- Alloy steel IP67 dual shear beam load cell
- High accuracy
- Suitable for track and truck scales and other weighing devices



AVAILABLE MODELS

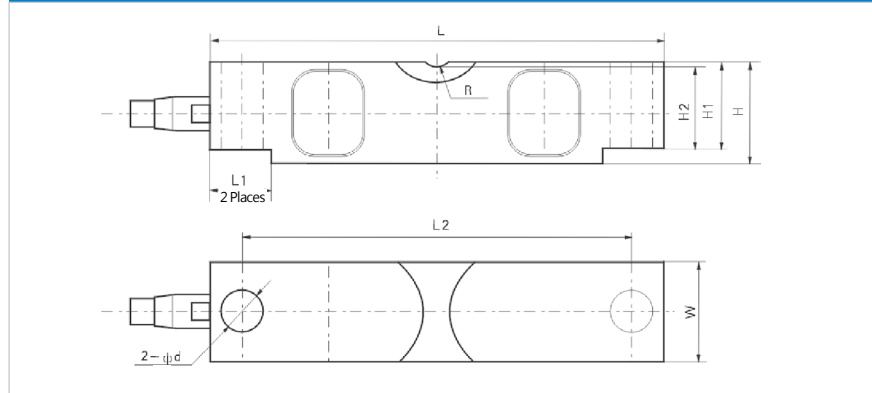
xxklb	A3M/B10M	H9N-xx-xxK-9B
25klb-200klb approved by NTEP A3M/B10M		



SPECIFICATION

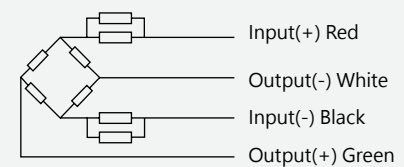
	klb	10/15/20/25/30/40/50/60/75/100/125		
		C3	A3M	B10M
Maximum capacity (E _{max})				
Accuracy class		C3	A3M	B10M
Maximum number of load cell intervals (nLC)		3000	III3000 Multiple	IIIL 10000 Multiple
Ratio of minimum LC verification interval $Y = E_{max} / V_{min}$		10000	5000	10000
Combined error	%FS	±0.020	±0.030	±0.050
Creep	%FS/30min	±0.016	±0.024	±0.040
Temperature effect on sensitivity	%FS/10°C	±0.011	±0.017	±0.040
Temperature effect on zero	%FS/10°C	±0.015	±0.023	±0.020
Output sensitivity (=FS)	mV/V	3.0±0.003		
Input resistance	Ω	700±7		
Output resistance	Ω	703±4		
Insulation resistance	MΩ	≥ 5000 (50VDC)		
Zero balance	%FS	≤ ±1.0		
Compensated temperature	°C	-10~+40		
Operating temperature	°C	-35~+70		
Excitation, recommended voltage	V	5~12 (DC)		
Excitation maximum	V	18 (DC)		
Safe overload	%FS	150		
Ultimate overload	%FS	300		
ATEX classification (optional)		II1G Ex ia II1C T4	II1D Ex iaD20 T73°C	II3G Ex nL II C T4

DIMENSIONS IN MM



Capacity	Dimension	L	L1	L2	H	H1	H2	Φd	W	R
25klb		197 (7.75)	35 (1.38)	165 (6.5)	49.3 (1.94)	43.2 (1.7)	41.4 (1.63)	Φ17.3 (0.68)	43 (1.7)	R19.1 (0.75)
40klb		260.4 (10.25)	49 (1.93)	216 (8.5)	62 (2.44)	53.3 (2.1)	50.8 (2.0)	Φ20.6 (0.81)	49.3 (1.9)	R25.4 (1.0)
50~75klb		260.4 (10.25)	49 (1.93)	216 (8.5)	74.7 (2.94)	67.3 (2.65)	64.5 (2.54)	Φ26.9 (1.06)	62 (2.44)	R25.4 (1.0)
100~125klb		387.4 (15.25)	79.5 (3.13)	324 (12.76)	98 (3.86)	87.1 (3.43)	83.8 (3.3)	Φ41.2 (1.62)	73.7 (2.9)	R38.1 (1.5)
150~200klb		489 (19.25)	127.8 (5.03)	387.4 (15.25)	147.3 (5.8)	130.1 (5.12)	112.8 (4.44)	Φ41.2 (1.62)	96.5 (3.8)	R50.8 (2.0)

WIRING



- Shielded, 4 conductor cable.
- Standard cable length: 9m
- Cable type and length for customer's own application are available on request.
- Shield connected to body.