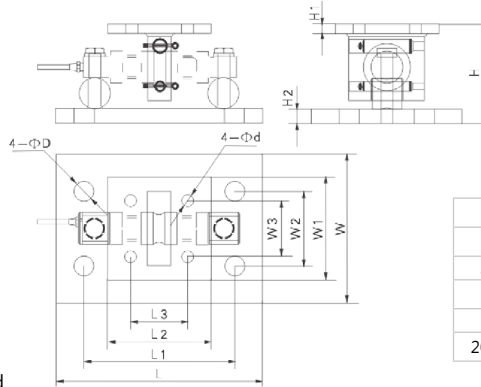


HM-9-401

Alloy steel mounting kit assembled with: H9C, B9C.



Capacity	Part number
5klb-20klb	HM-9-401-5/20K
30klb-75klb	HM-9-401-30/75K
100klb	HM-9-401-100K
150klb	HM-9-401-150K
200klb-250klb	HM-9-401-200/250K

SHORT DESCRIPTION

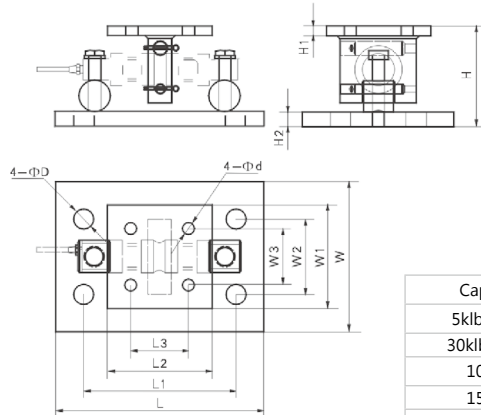
- Compact construction, easy installation.
- Excellent anti-reversal ability.
- Using under heavy static load or light dynamic load.

SPECIFICATION	
Safety loading	150%FS
Ultimate loading	300%FS
Max. anti-reversal loading	40%FS
Max. anti-side loading	20%FS
Max. vertical lifting	5-20K:3.3K(1.5t)/
	30-75K:11K(5t)
	100-150K:16.5K(7.5t)/
200-250K:68K(31t)	

Dimension Capacity (klb)	Dimension													
	L	L1	L2	L3	W	W1	W2	W3	H	H1	H2	D	d	
5-20klb	279.4 (11.0)	203.2 (8.0)	139.7 (5.5)	76.2 (3.0)	203.2 (8.0)	139.7 (5.5)	101.6 (4.0)	76.2 (3.0)	139.2 (5.48)	12.7 (0.5)	19 (0.75)	26.9 (1.06)	16 (0.63)	
30-75klb	381 (15.0)	292.1 (11.5)	203.2 (8.0)	130.3 (5.13)	254 (10.0)	203.2 (8.0)	152.4 (6.0)	130.3 (5.13)	214.1 (8.43)	19.1 (0.75)	25 (1.0)	31 (1.22)	19.1 (0.75)	
100-150klb	57.2 (18.0)	355.6 (14.0)	254 (10.0)	190.5 (7.5)	304.8 (12.0)	254 (10.0)	228.6 (9.0)	190.5 (7.5)	264 (10.39)	31.8 (1.25)	31.8 (1.25)	35.1 (1.38)	20.6 (0.81)	
200-250klb	660.4 (26.0)	508 (20.0)	304.8 (12.0)	228.6 (9.0)	304.8 (12.0)	304.8 (12.0)	152.4 (6.0)	228.6 (9.0)	400 (15.73)	50.8 (2.0)	50.8 (2.0)	47.8 (1.88)	26.9 (1.06)	

BM-9-402

Alloy steel mounting kit assembled with: H9C, B9C.



Capacity	Part number
5klb-20klb	BM-9-402-5/20K
30klb-75klb	BM-9-402-30/75K
100klb	BM-9-402-100K
150klb	BM-9-402-150K
200klb-250klb	BM-9-402-200/250K

SHORT DESCRIPTION

- Compact construction, easy installation.
- Excellent anti-reversal ability.
- Using under heavy static load or light dynamic load.
- Stainless steel, with good ability against corrosive environments.

SPECIFICATION	
Safety loading	150%FS
Ultimate loading	300%FS
Max. anti-reversal loading	40%FS
Max. anti-side loading	20%FS
Max. vertical lifting	5-20K:3.3K(1.5t)/
	30-75K:11K(5t)
	100-150K:16.5K(7.5t)/
200-250K:68K(31t)	

Dimension Capacity(klb)	Dimension													
	L	L1	L2	L3	W	W1	W2	W3	H	H1	H2	D	d	
5-20klb	279.4 (11.0)	203.2 (8.0)	139.7 (5.5)	76.2 (3.0)	203.2 (8.0)	139.7 (5.5)	101.6 (4.0)	76.2 (3.0)	139.2 (5.48)	12.7 (0.5)	19 (0.75)	26.9 (1.06)	16 (0.63)	
30-75klb	381 (15.0)	292.1 (11.5)	203.2 (8.0)	130.3 (5.13)	254 (10.0)	203.2 (8.0)	152.4 (6.0)	130.3 (5.13)	214.1 (8.43)	19.1 (0.75)	25 (1.0)	31 (1.22)	19.1 (0.75)	
100-150klb	57.2 (18.0)	355.6 (14.0)	254 (10.0)	190.5 (7.5)	304.8 (12.0)	254 (10.0)	228.6 (9.0)	190.5 (7.5)	264 (10.39)	31.8 (1.25)	31.8 (1.25)	35.1 (1.38)	20.6 (0.81)	
200-250klb	660.4 (26.0)	508 (20.0)	304.8 (12.0)	228.6 (9.0)	304.8 (12.0)	304.8 (12.0)	152.4 (6.0)	228.6 (9.0)	400 (15.73)	50.8 (2.0)	50.8 (2.0)	47.8 (1.88)	26.9 (1.06)	