

FEATURES

- Aluminium-Alloy IP65 single point load cell
- Colourless anodized
- Suitable for single or double load cell structured platform scales
- Recommended platform size: 200 x 200 mm



AVAILABLE MODELS

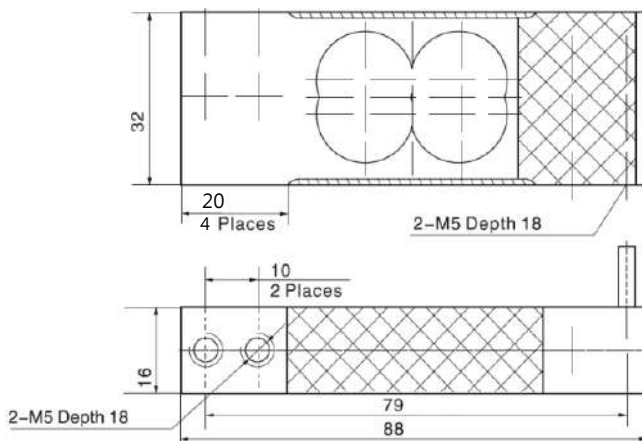
Capacity	Accuracy	Full article description
2 kg	C3D	L6J-C3D-2kg-0.45B
3 kg	C3D	L6J-C3D-3kg-0.45B
5 kg	C3D	L6J-C3D-5kg-0.45B
8 kg	C3D	L6J-C3D-8kg-0.45B
15 kg	C3D	L6J-C3D-15kg-0.45B
20 kg	C3D	L6J-C3D-20kg-0.45B



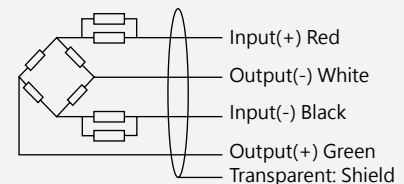
SPECIFICATION

Accuracy class		C3D
Output sensitivity (=FS)	mV/V	1.5 ± 0.2
Maximum capacity (E _{max})	kg	2/3/5/8/10/15/20
Maximum number of load cell intervals (nLC)		2500
Ratio of minimum LC verification interval Y=E _{max} / V _{min}		5000
Combined error	%FS	± 0.0280
Minimum dead load	%FS	0
Safe overload	%FS	150
Ultimate overload	%FS	300
Zero balance	%FS	± 2.0
Excitation, recommended voltage	V	5 ~ 12 (DC)
Excitation maximum	V	18 (DC)
Input resistance	Ω	406 ± 6
Output resistance	Ω	350 ± 3
Insulation resistance	MΩ	≥ 5000 (50VDC)
Compensated temperature	°C	-10 ~ +40
Operating temperature	°C	-35 ~ +65
Storage temperature	°C	-40 ~ +70
Element material		Aluminium
Recommended torque on fixation	N.m	M5: 7
Ingress protection (according to EN 60529)		IP65

DIMENSIONS IN MM



WIRING



- Shielded, 4 conductor cable
- Cable Diameter: Φ3mm
- Standard cable length: 0.45m
- Shield is not connected to element
- Cable jacket is PVC