

FEATURES

- Nickel plated alloy steel IP67 "S" type load cell
- Tension and compression applications
- Suitable for hanging, hopper and other weighing devices
- Also available in imperial capacities and dimensions



AVAILABLE MODELS

xxkg	C3/A5S/B10S	H3G-xx-xxkg-6B
xxt	C3/A5S/B10S	H3G-xx-xxt-6B
xxlb	A5S/B10S	H3G-xx-xx-6YB
xxklb	A5S/B10S	H3G-xx-xxK-6YB
20klb	C3	H3G-C3-20K-6YT
OIML Certificate (50kg-250kg C3 Class)		
NTEP A5S/B10S Certificate 50kg-7.5t(50lb-15klb)		



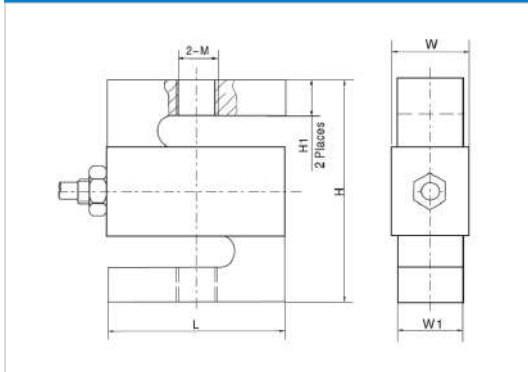
Certificate no. 06-099A1

OIML test certificate no. TC7866 Revision 0 C of C no R60/2000-NL1-10.30

SPECIFICATION

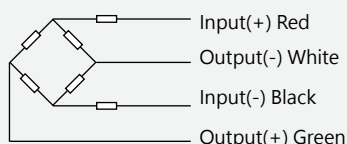
Maximum capacity (E _{max})	t	0.05/0.1/0.2/0.25/0.3/0.5/1/2.5/5/7.5		
	lb	250/500/750/1K/1.5K/2K/2.5K/3K/5K/7.5K/10K/15K/20K		
Accuracy class		C3	A5S	B10S
Approvals		OIML R60 C3	III5000 Single Pack	IIIL10000 Single Pack
Maximum number of load cell intervals (n _{LC})		3000	5000	10000
Ratio of minimum LC verification interval Y=E _{max} / V _{min}		10000	15000	10000
Combined error	%FS	±0.020	±0.018	±0.035
Creep	%FS/30min	±0.016	±0.012	±0.030
Temperature effect on sensitivity	%FS/10°C	±0.011	±0.009	±0.030
Temperature effect on zero	%FS/10°C	±0.015	±0.010	±0.030
Output sensitivity (=FS)	mV/V	3.0±0.008		
Input resistance	Ω	430±60		
Output resistance	Ω	351±2.0		
Insulation resistance	MΩ	≥ 5000 (50VDC)		
Zero balance	%FS	±1.0		
Compensated temperature	°C	-10~+40		
Operating temperature	°C	-35~+70		
Excitation, recommended voltage	V	5~12 (DC)		
Excitation maximum	V	18 (DC)		
Safe overload	%FS	150		
Ultimate overload	%FS	300		
Ingress protection (according to EN 60529)		IP67		
Recommended torque on fixation	N.m	M8:25	M12:75	M20:450
ATEX classification (optional)		IIIG Ex ia IIIC T4	IIID Ex iaD20 T73°C	IIIG Ex nL II C T4

DIMENSIONS IN MM



Capacity	Dimension (mm)	L	H	W1	W	M	H1
50kg,100kg		50.8 (2.0)	63.5 (2.5)	12.7 (0.5)	16.07 (0.63)	M8	10.16 (0.4)
50klb~300lb						1/4-28UNF	
200kg~500kg		50.8 (2.0)	63.5 (2.5)	19.05 (0.75)	22.43 (0.88)	M12	
500lb~1.5klb						1/2-20UNF	
1t		50.8 (2.0)	63.5 (2.5)	25.4 (1.0)	28.78 (1.13)	M12	15.2 (0.6)
2,2.5klb						1/2-20UNF	
2.5t		76.2 (3.0)	101.6 (4.0)	25.4 (1.0)	28.78 (1.13)	M20 x 1.5	20 (0.79)
3klb						1/2-20UNF	
5t		76.2 (3.0)	101.6 (4.0)	25.4 (1.0)	28.78 (1.13)	M20 x 1.5	15.24 (0.6)
5klb,10klb						3/4-16UNF	
7.5t		101.6 (4.0)	139.7 (5.5)	31.75 (1.25)	35.13 (1.38)	M24 x 2	30 (1.18)
15klb						1-14UNS	31 (1.22)
20klb		127 (5.0)	177.8 (7.0)	50.8 (2.0)	54.2 (2.13)	1½-12UNF	39.9(1.57)

WIRING



- Shielded, 4 conductor cable
- Cable diameter: Φ5mm
- Standard cable length: 6m
- Shield is not connected to element