

AVAILABLE MODELS

Capacity	Accuracy	Full article description
25kg	C3 Excluded from OIML	H3-C3-25kg-3B
50kg	C3 Excluded from OIML	H3-C3-50kg-3B
100kg	C3/C4	H3-C3/C4-100kg-3B
150kg	C3/C4	H3-C3/C4-150kg-3B
200kg	C3/C4	H3-C3/C4-200kg-3B
250kg	C3/C4	H3-C3/C4-250kg-3B
300kg	C3/C4	H3-C3/C4-300kg-3B
500kg	C3/C4	H3-C3/C4-500kg-3B
600kg	C3/C4	H3-C3/C4-600kg-3B
750kg	C3/C4	H3-C3/C4-750kg-3B
1t	C3/C4	H3-C3/C4-1t-3B
1.5t	C3/C4	H3-C3/C4-1.5t-3B
2t	C3/C4	H3-C3/C4-2t-3B
2.5t	C3/C4	H3-C3/C4-2.5t-3B
3t	C3 Excluded from OIML	H3-C3-3t-3B
5t	C3 Excluded from OIML	H3-C3-5t-3B
7.5t	C3 Excluded from OIML	H3-C3-7.5t-3B
10t	C3 Excluded from OIML	H3-C3-10t-3B
15t	C3 Excluded from OIML	H3-C3-15t-3B
20t	C3 Excluded from OIML	H3-C3-20t-3B
30t	C3 Excluded from OIML	H3-C3-30t-3B

FEATURES

- Nickel plated alloy steel IP67 "S" type load cell
- Tension and compression applications
- Suitable for hanging, hopper and other weighing devices
- Also available in imperial capacities and dimensions



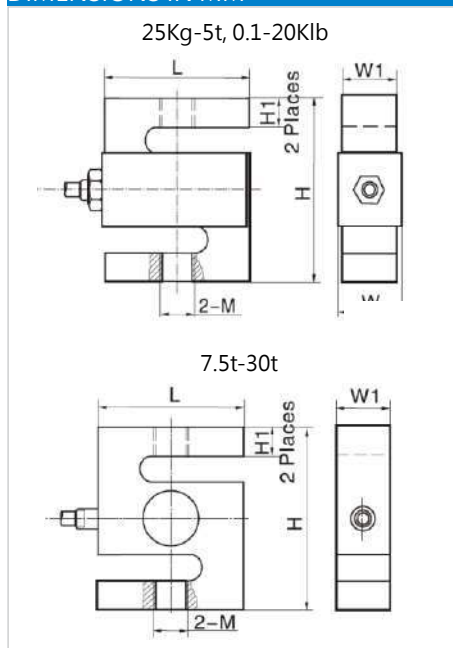
OIML test certificate no. D09-03.18 Revision 2
C of C no R60/2000-CN-00.01 Revision 1

Certificate no. 06-099A1

SPECIFICATION

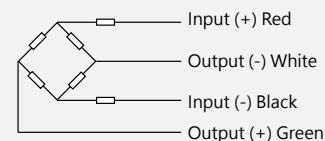
Accuracy class		OIML R60 C3	OIML R60 C4	C3
Output sensitivity (=FS)	mV/V	2.0±0.004 (Metric)		3.0±0.008 (Imperial)
Maximum capacity (E _{max})	t	0.025/0.05/0.1/0.15/0.2/0.25/0.3/0.5/0.6/0.75/1/1.5/2/2.5/3/5/7.5/10/15/20/30		
	lb	100/150/200/250/300/500/750/1K/1.5K/2K/2.5K/3K/5K/10K/15K/20K		
Maximum number of load cell intervals (nLC)		3000	4000	3000
Ratio of minimum LC verification interval Y=E _{max} / v _{min}		10000	20000	10000
Combined error	%FS	±0.020	± 0.018	±0.020
Minimum dead load	kg	0		
Safe overload	%FS	150		
Ultimate overload	%FS	300		
Zero balance	%FS	±1.5 (Metric)		±1.0 (Imperial)
Excitation, recommended voltage	V	5 ~ 12 (DC)		
Excitation maximum	V	18 (DC)		
Input resistance	Ω	350 ± 3.5		
Output resistance	Ω	351 ± 2.0		
Insulation resistance	MΩ	≥ 5000 (50VDC)		
Compensated temperature	°C	-10 ~ +40		
Operating temperature	°C	-35 ~ +65		
Storage temperature	°C	-40 ~ +70		
Element material		Nickel plated alloy steel		
Ingress protection (according to EN 60529)		IP67		
Recommended torque on fixation	N.m	M8:25 M10: 50	M12:75 M20:450	M33:750 M42:1450
ATEX classification (optional)		IIIG Ex ia IIC T4	IIID Ex iaD 20 T73°C	IIIG Ex nL IIC T4

DIMENSIONS IN MM



Dimension	H	L	W1	M	H1
Capacity					
25kg ~ 50kg	76.2 (3.0)	50.8 (2.0)	12.7 (0.5)	M8	15.7 (0.62)
0.1t, 0.15t	76.2 (3.0)	50.8 (2.0)	19 (0.75)	M10×1.5	15.3 (0.60)
0.2t ~ 0.75t	76.2 (3.0)	50.8 (2.0)	19 (0.75)	M12×1.75	15.1 (0.59) ~ 12.5 (0.48)
1, 1.5t	76.2 (3.0)	50.8 (2.0)	25.4 (1.0)	M12×1.75	12.6 (0.50), 11.7 (0.46)
2t ~ 5t	101.6 (4.0)	76.2 (3.0)	25.4 (1.0)	M20×1.5	20 (0.79)
7.5t, 10t	175 (8.89)	125 (4.92)	50 (1.97)	M33×3	41 (1.61), 39.5 (1.56)
15t, 20t	200 (7.87)	160 (6.3)	60 (2.36)	M42×3	51 (2.01)
30t	230 (9.06)	190 (7.48)	80 (3.15)	M42×3	57.5 (2.26)

WIRING



- Shielded, 4 conductor cable.
- Cable diameter: Φ5mm
- Standard cable length for 25kg - 1.5t: 3m and for 2t - 30t: 6m.
- Shield is not connected to element.