

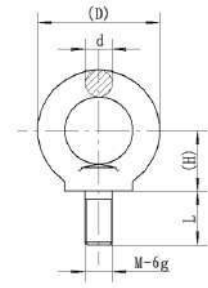
## HL-3-001



Capacity	Part number
50kg,100kg	HL-3-001-25/50kg
250kg	HL-3-001-200/300kg
500kg	HL-3-001-500/750kg
1t	HL-3-001-1/1.5t
2.5t	HL-3-001-2/3t
5t	HL-3-001-5t

Capacity	a1	a2	H	M×P×L	Lifting Weight
50kg,100kg	25(0.98)	20(0.79)	97.5(3.84)	M8×1.25×24	0.25t
250kg	28(1.10)	22(0.87)	106(4.17)	M12×1.75×28	0.4t
500kg	34(1.34)	27(1.06)	135.5(5.33)	M12×1.75×28	0.8t
1t	40(1.57)	32(1.26)	152.5(6.00)	M12×1.75×28	1.6t
2.5t	48(1.89)	38(1.50)	183(7.20)	M20×1.5×35	3.2t
5t	56(2.20)	45(1.77)	221(8.70)	M20×1.5×35	6.3t

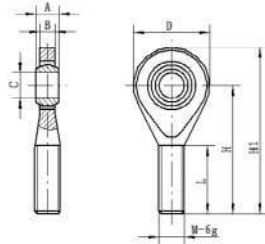
## HL-3-002



Capacity	Part number
25kg-100kg	HL-3-002-25/50kg
150kg-250kg	HL-3-002-200/300kg
500kg	HL-3-002-500/750kg
1t	HL-3-002-1/1.5t
2.5t	HL-3-002-2/3t
5t	HL-3-002-5t

Capacity	H	D	d	M×P×L	Lifting Weight
25kg-100kg	18 (0.71)	36 (1.42)	9.1 (0.36)	M8×1.25×16	0.16t
150kg-250kg	26 (1.02)	52 (2.05)	13.1 (0.52)	M12×1.75×22	0.4t
500kg	31 (1.22)	62 (2.44)	15.2 (0.60)	M12×1.75×22	1.0t
1t	36 (1.42)	72 (2.83)	17.4 (0.69)	M12×1.75×22	1.6t
2.5t	53 (2.09)	104 (4.09)	25.7 (1.01)	M20×1.5×35	4.0t
5t	63 (2.48)	123 (4.84)	30 (1.18)	M20×1.5×35	6.3t

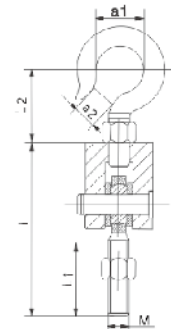
## HL-3-003



Capacity	Part number
25kg-100kg	HL-3-003-25/50kg
150kg-1.0t	HL-3-003-200kg/1.0t
2.5t	HL-3-003-2/3t
5t	HL-3-003-5t

Capacity	H	A	B	C	D	H1	M×L	Lifting weight
25kg-100kg	42 (1.65)	8 (0.31)	6.5 (0.26)	8 (0.31)	25 (0.98)	56 (2.20)	M8×1.25×21	0.55t
150kg-1.0t	54 (2.13)	10 (0.39)	8.5 (0.33)	12 (0.47)	35 (1.38)	73 (2.87)	M12×1.75×28	1.08t
2.5t	78 (3.07)	16 (0.63)	13.5 (0.53)	20 (0.79)	54 (2.13)	107 (4.21)	M20×1.5×43	3.0t
5t	89 (3.5)	22 (0.87)	20 (0.79)	30 (1.18)	75 (2.95)	128 (5.04)	M20×1.5×43	6.0t

## HL-3-004



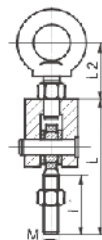
Capacity	Part number
25kg-100kg	HL-3-004-25/50kg
150kg-250kg	HL-3-004-200/300kg
500kg	HL-3-004-500/750kg
1t	HL-3-004-1t
2.5t	HL-3-004-2/3t
5t	HL-3-004-5t

Capacity	a1	a2	L	L1	L2	M×P	Lifting weight
25kg-100kg	25(0.98)	20(0.79)	77(3.03)	21(0.83)	65(2.56)	M8×1.25	0.25t
150kg-250kg	28(1.10)	22(0.87)	89(3.50)	28(1.10)	77(3.03)	M12×1.75	0.4t
500kg	34(1.34)	27(1.06)	89(3.50)	28(1.10)	103.5(4.07)	M12×1.75	0.8t
1t	40(1.57)	32(1.26)	89(3.50)	28(1.10)	117.5(4.63)	M12×1.75	1.08t
2.5t	48(1.89)	38(1.5)	133(5.24)	43(1.69)	134(5.28)	M20×1.5	3.0t
5t	56(2.20)	45(1.77)	149(5.87)	43(1.69)	173(6.81)	M20×1.5	6.0t

## HL-3-005



Capacity	Part number
25kg-100kg	HL-3-005-25/50kg
150kg-250kg	HL-3-005-200/300kg
500kg	HL-3-005-500/750kg
1t	HL-3-005-1t
2.5t	HL-3-005-2/3t
5t	HL-3-005-5t



Capacity	L	L1	L2	M×P	Lifting weight
25kg-100kg	77 (3.03)	21 (0.83)	22 (0.87)	M8×1.25	0.16t
150kg-250kg	89 (3.50)	28 (1.10)	33 (1.3)	M12×1.75	0.4t
500kg	89 (3.50)	28 (1.10)	38 (1.5)	M12×1.75	1.0t
1t	89 (3.50)	28 (1.10)	43 (1.7)	M12×1.75	1.08t
2.5t	133 (5.24)	43 (1.69)	63 (2.48)	M20×1.5	3.0t
5t	149 (5.87)	43 (1.69)	78 (3.07)	M20×1.5	6.0t

Features: Matched with S type load cells, suitable for hybrid scales, crane scales, packaging scales, hopper scales, and other electronic weighing devices.