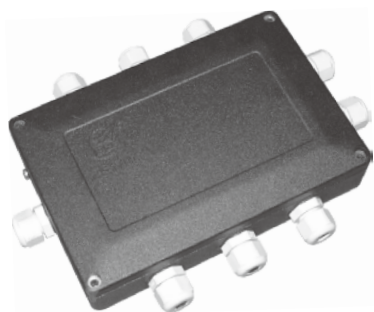


JUNCTION BOX

JB05A



FEATURES

- Cast aluminum, plastic-sprayed
- East to assemble and calibrate, high reliability
- Fully encapsulated, water-proof, moistureproof and lightning protected.
- Surge protection
- Sensitivity matched adjusting method
- Operating temperature: $-40^{\circ}\text{C} \sim +85^{\circ}\text{C}$

OPTIONAL TABLE

Part number	Channels
JB05A-4	4
JB05A-6	6
JB05A-8	8

DESCRIPTION

- Specially designed for scales
- This model are available to connect 4 to 8 load cells with 4-wire cable on different requests.

Dimensions in mm

