

FEATURES

- Stainless steel IP67 "S" type load cell
- Tension and compression applications
- Suitable for hanging, hopper and other weighing devices
- Also available in imperial capacities and dimensions
- OIML test certificate no. D09-06.07.
- OIML C of C no. R60/2000-CN1-06.02.
- NTEP certificate no. 06-099A1.



AVAILABLE MODELS

xxkg	C3/A5S/B10S	B3G-xx-xxkg-6B
xxt	C3/A5S/B10S	B3G-xx-xtt-6B
xxlb	A5S/B10S	B3G-xx-xx-6YB
xxklb	A5S/B10S	B3G-xx-xxK-6YB
20klb	C3	B3G-C3-20K-6YT
50kg-10t approved by OIML C3.		
50kg-7.5t (50lb-15klb) approved by NTEP A5S/B10S.		

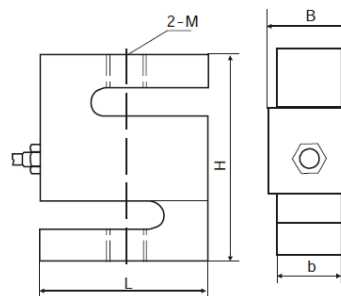


SPECIFICATION

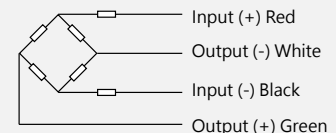
Maximum capacity (Emax)	t	0.025/0.05/0.1/0.15/0.25/0.5/1/2.5/5/7.5/10			
	lb	50/75/100/150/200/250/300/500/750/1K/1.5K/2K/2.5K/3K/5K/7.5K/10K/15K/20K			
Accuracy class		C3	C4	A5S	B10S
Approvals		OIML R60 C3		III5000 Single Pack	IIIL10000 Single Pack
Maximum number of load cell intervals (nLC)		3000	4000	5000	10000
Ratio of minimum LC verification interval Y=Emax / Vmin		10000	14000	15000	10000
Combined error	%FS	±0.020	±0.018	±0.018	±0.035
Output sensitivity (= FS)	mV/V	3.0±0.008			
Minimum dead load	kg	0			
Safe overload	%FS	150			
Ultimate overload	%FS	300			
Zero balance	%FS	± 1.0			
Excitation, recommended voltage	V	5 ~ 12 (DC)			
Excitation maximum	V	18 (DC)			
Input resistance	Ω	430 ± 60			
Output resistance	Ω	351 ± 2			
Insulation resistance	MΩ	≥ 5000 (50VDC)			
Compensated temperature	°C	-10~+40			
Operating temperature	°C	-35~+65			
Storage temperature	°C	-40~+70			
Element material		Stainless steel			
Ingress protection (according to EN 60529)		IP67			
Recommended torque on fixation	N.m	M8:25	M12:75	M20:450	M24:750 M30:1450
ATEX classification (optional)		II1G Ex ia IIC T4	II1D Ex iaD 20 T73°C	II3G Ex nL IIC T4	

Capacity	Dimension (mm)	L	H	W1	W	M	H1
50kg~100kg		50.8	60.96	11.68	15.06	M8	8.89
50lb~300lb		(2.0)	(2.4)	(0.46)	(0.59)	1/4-28UNF	
250kg~500kg		50.8	60.96	18.03	21.4	M12	8.89
500lb~1.5klb		(2.0)	(2.4)	(0.71)	(0.84)	1/2-20UNF	
1t		50.8	60.96	24.38	27.76	M12	8.89
2,2.5klb		(2.0)	(2.4)	(0.96)	(1.09)	1/2-20UNF	
2.5t		76.2	99.06	24.38	27.76	M20 x 1.5	13.97
3klb		(3.0)	(3.9)	(0.96)	(1.09)	1/2-20UNF	(0.55)
5t		74.68	99.06	30.74	34.12	M20 x 1.5	18.37
10klb		(2.94)	(3.9)	(1.21)	(1.34)	3/4-16UNF	(0.72)
7.5t		87.38	139.7	37.08	40.46	M24 x 2	27.5
15klb		(3.44)	(5.5)	(1.46)	(1.59)	1-14UNS	(1.08)
10t		112.78	177.8	42.93	46.31	M30 x 2	39.9
20klb		(4.44)	(7.0)	(1.69)	(1.82)	1 1/4-12UNF	(1.57)
5klb		76.2	99.06	24.38	27.76	3/4-16UNF	13.97
		(3.0)	(3.9)	(0.96)	(1.09)		(0.55)

DIMENSIONS IN MM



WIRING



- Shielded, 4 conductor cable.
- Cable diameter: Φ5mm
- Standard cable length: 6m
- Shield is not connected to element