

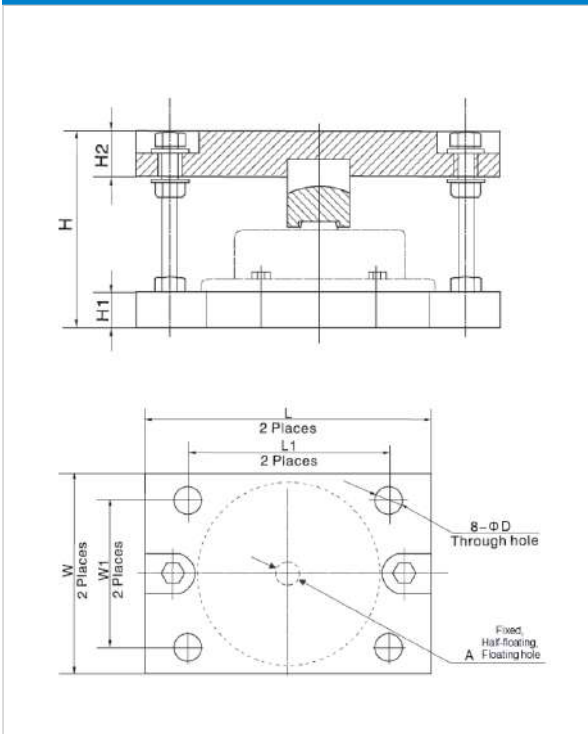
HM-2-401

SHORT DESCRIPTION

- Anti-reversal ability
- Easy installation
- Nickel plated alloy steel
- Self-aligning ability
- Can be used with Load Cell models: H2F
- Available in fixed, half-floating and floating version



DIMENSIONS IN MM

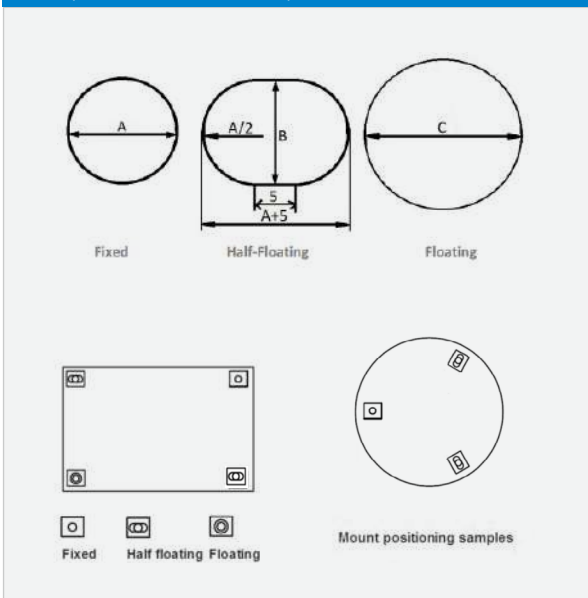


AVAILABLE MODELS

Model	Capacity	Part number
HM-2-401	1t	HM-2-401-1t (Fixed)
	2t	HM-2-401-2t (Fixed)
	3t	HM-2-401-3t (Fixed)
	5t	HM-2-401-5t (Fixed)
	10t	HM-2-401-10t (Fixed)
	15t	HM-2-401-15t (Fixed)
	20t	HM-2-401-20t (Fixed)
	30t	HM-2-401-30t (Fixed)
	50t	HM-2-401-50t (Fixed)

Capacity	Dimension							
	H	H1	H2	L	L1	W	W1	D
1t-5t	112 (4.41)	20 (0.79)	27 (1.06)	228 (8.98)	168 (6.61)	170 (6.69)	110 (4.33)	17.5 (0.69)
10t	143 (5.63)	25 (0.98)	31 (1.22)	260 (10.24)	200 (7.87)	200 (7.87)	140 (5.51)	20 (0.79)
15t	163 (6.42)	30 (1.18)	37 (1.46)	294 (11.57)	234 (9.21)	234 (9.21)	174 (6.85)	20 (0.79)
20t	173 (6.81)	30 (1.18)	37 (1.46)	320 (12.6)	260 (10.24)	260 (10.24)	200 (7.87)	20 (0.79)
30t	200 (7.87)	35 (1.38)	47 (1.85)	330 (12.99)	270 (10.63)	270 (10.63)	210 (8.27)	23 (0.91)
50t	225 (8.86)	40 (1.57)	55 (2.17)	364 (14.33)	294 (11.57)	294 (11.57)	224 (8.82)	27 (1.06)

FIXED, HALF-FLOATING, FLOATING HOLE & MOUNT POSITIONING



Dimension(mm)	A	B	C
1t	35.6	35.6	40.6
2t	41.6	41.6	46.6
3t	35.6	35.6	40.6
5t	37.6	37.6	42.6
10t	57.6	57.6	62.6
15t	59.5	59.5	64.5
20t	61.5	61.5	66.5
30t	69	69	74
50t	73	73	78

- During installation you have to make sure that the top-plate can move freely.
- The space between the top-plate and lift-off protection bolt head, and nut below should be sufficient to let the top-plate move freely.
- 3mm is the recommended space.