

## FEATURES

- Alloy steel, nickel-plated, column structure, hermetically welded.
- Ingress protection (according to EN 60529): IP68
- Lightning protection up to 10,000V, suitable for truck scales, platform scales, hopper scales and other electronic weighing devices.



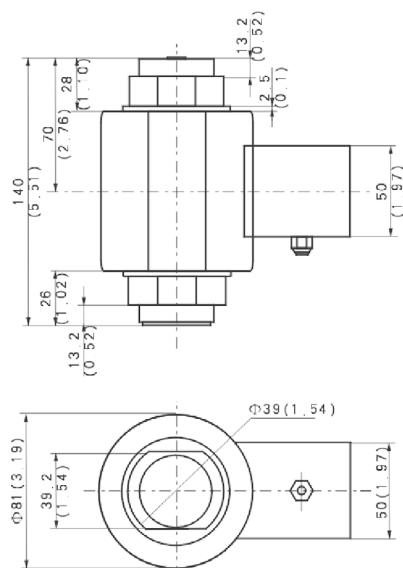
## AVAILABLE MODELS

Capacity	Accuracy	Full article description
30t	C3	HM14L-C3-30t-15B
40t	C3	HM14L-C3-40t-15B

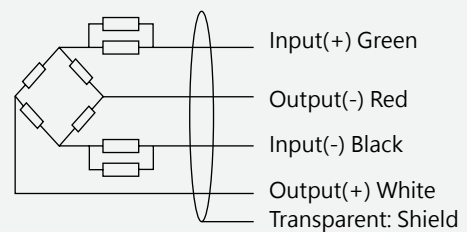
## SPECIFICATION

Maximum capacity (E <sub>max</sub> )	t	30/40
Output sensitivity (=FS)	mV/V	2.0±0.002
Accuracy class		C3
Combined error	%FS	±0.02
Hysteresis	%FS	±0.02
Non-repeatability	%FS	±0.011
Creep	%FS/30min	±0.016
Zero output	%FS	±1.0
Compensated temperature	°C	-10~+40
Operating temperature	°C	-35~+65
Temperature effect on sensitivity	%FS/10°C	±0.011
Temperature effect on zero	%FS/10°C	±0.015
Input resistance	Ω	1150±3
Output resistance	Ω	1000±3.5
Insulation resistance	MΩ	≥ 5000 (50VDC)
Excitation, recommended voltage	V	5~12 (DC)
Excitation maximum	V	18 (DC)
Safe overload	%FS	150
Ultimate overload	%FS	300

## DIMENSIONS IN MM



## WIRING



- Adopt shielded, 4 conductor cable: Φ5mm
- Standard cable length: 15m.